

Unlocking Emissions Compliance:

The Role of High-Frequency Data

Frank Paleokrassas
Chief Product Officer

31 October 2024



Established in
2016

Our People
60



- Naval Architects & Marine Engineers
- Mechanical/Electrical/Electronic engineers
- IoT experts, IT & Cloud Computing Specialists, Developers
- Data Analysts, AI & Machine Learning Experts

Since 2018, member of the maritime focused,
sustainable solutions group owned by



Partnerships

Acce/eron



KONGSBERG
DIGITAL

DTH

GEISLINGER



VERACITY
by DNV

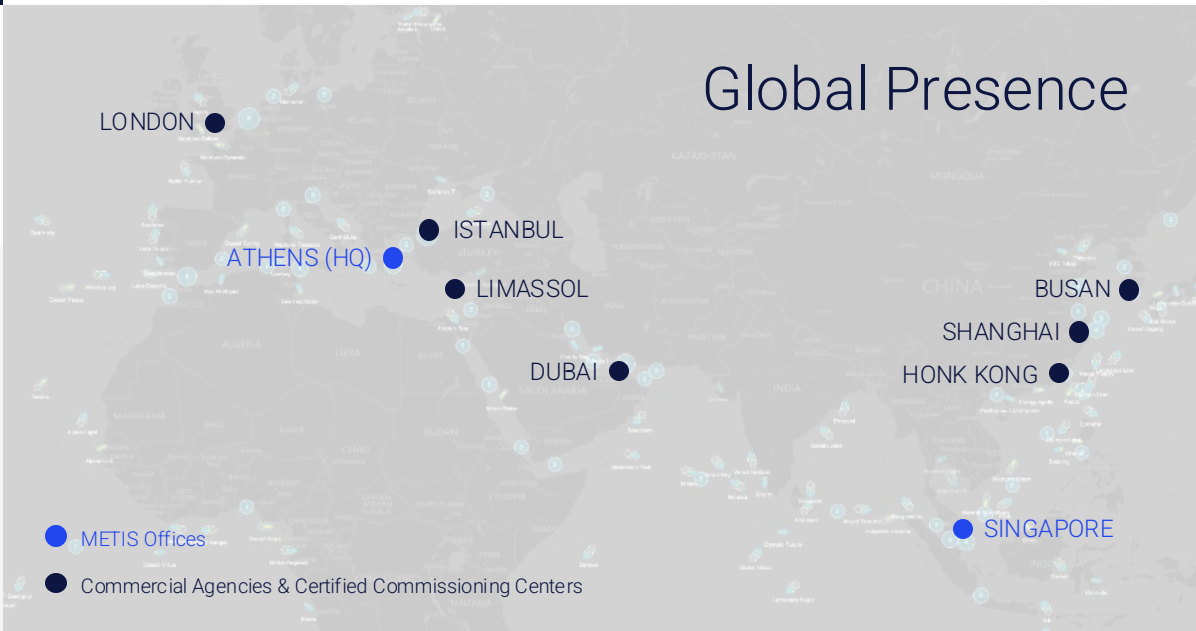
ZERO44



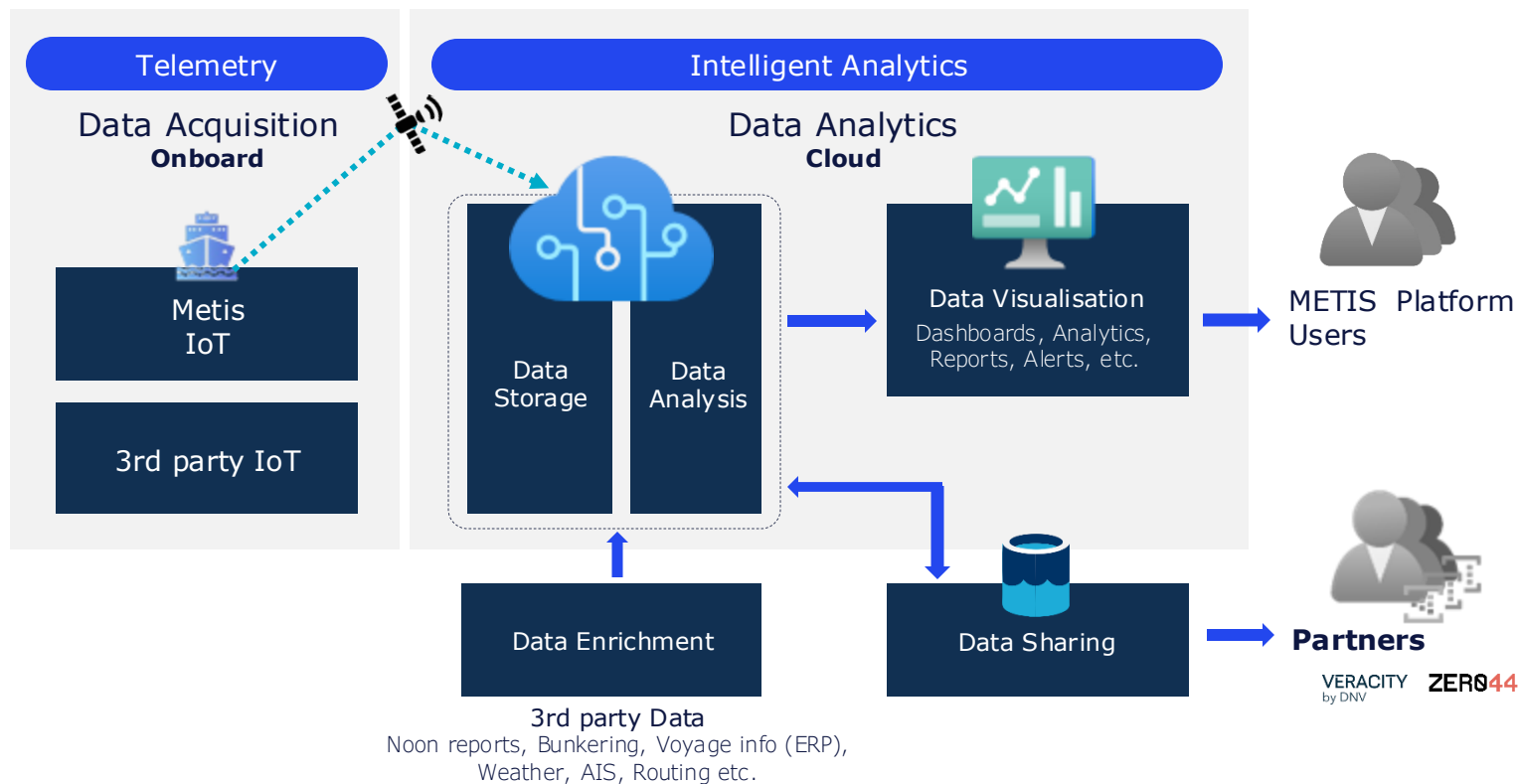
meteoblue



Global Presence

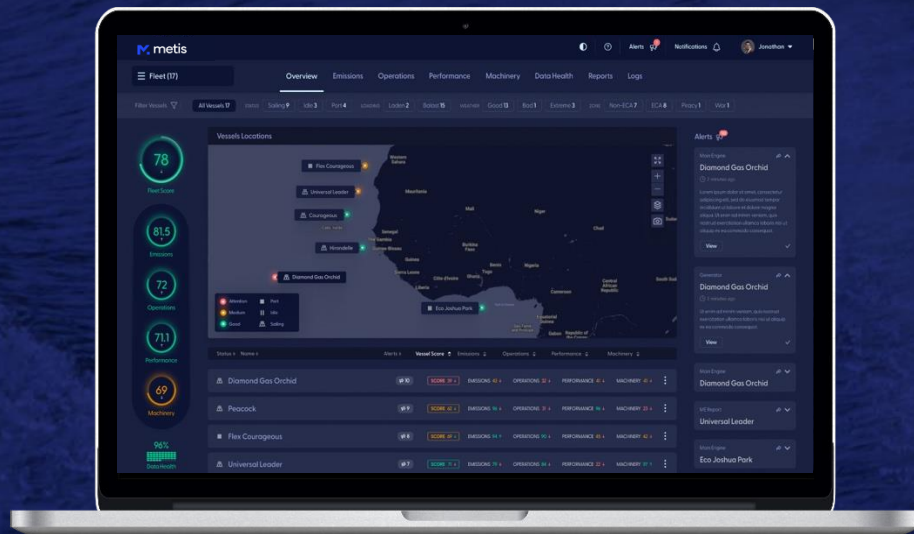


Overview



Metis Space

TELEMETRY-FIRST FLEET PERFORMANCE MANAGEMENT



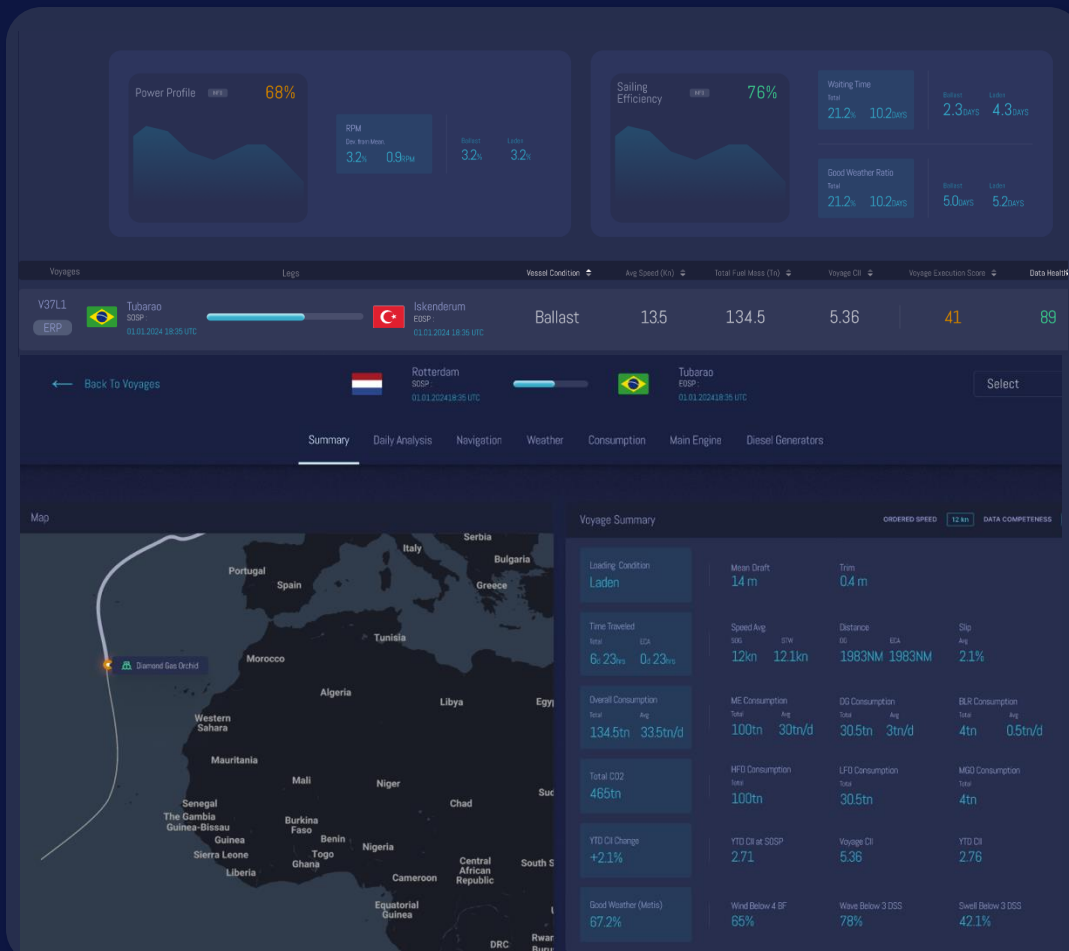
- Optimize Operations
- Manage Complexity
- Ensure Compliance

Operations

We help reduce fuel consumption through:

- Optimising speed & route
- Avoiding bad weather
- Ensuring steady operation
- Avoiding sailing fast and then waiting

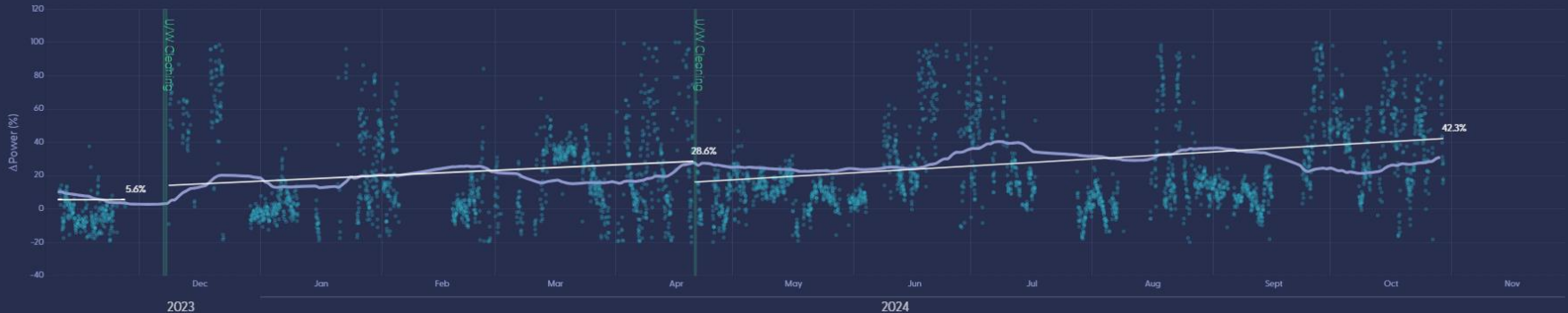
Fleet Activity Last 12 Months



Performance

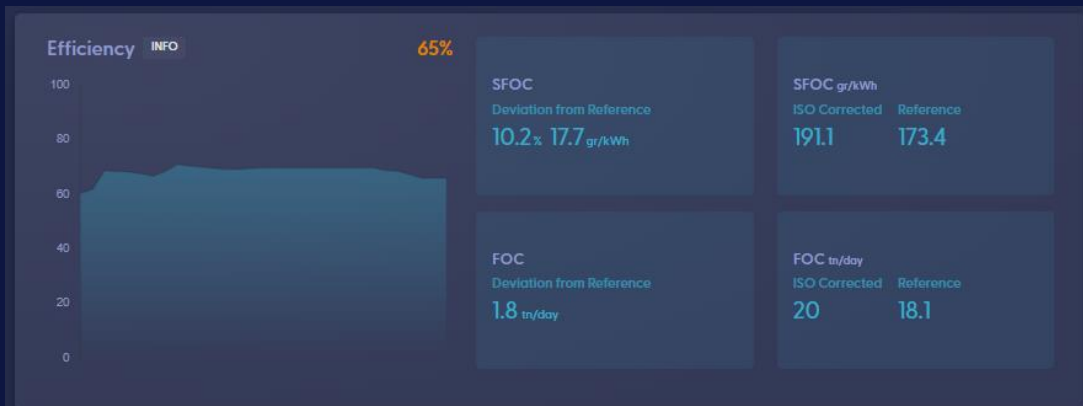
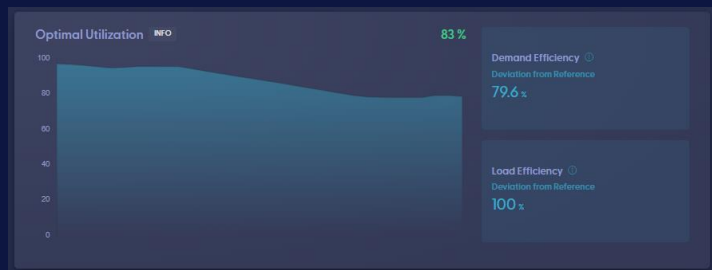
We help reduce fuel consumption by closely monitoring the hull condition and its impact added power.

Our system predicts the ideal time for doing an inspection, while monitoring idle days with a particular risk on fouling.

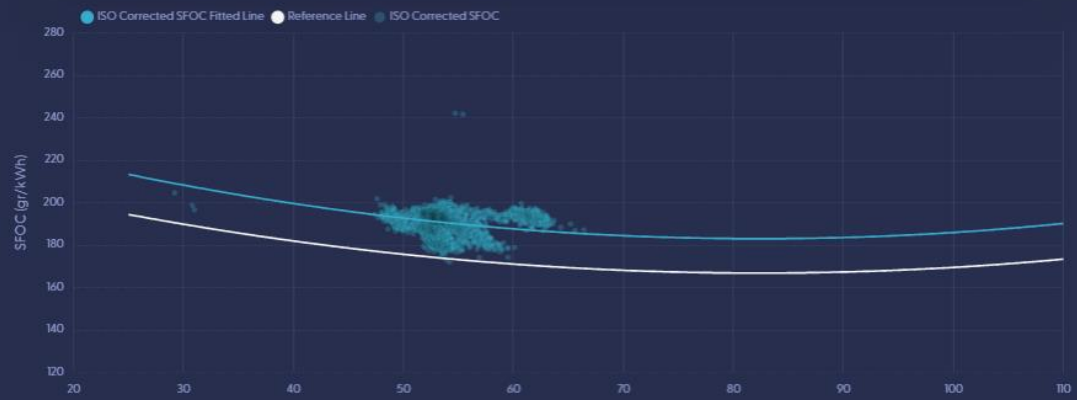


Machinery

We help reduce fuel consumption through monitoring the optimal operation of the main consumers.



SFOC Over Power



Emissions

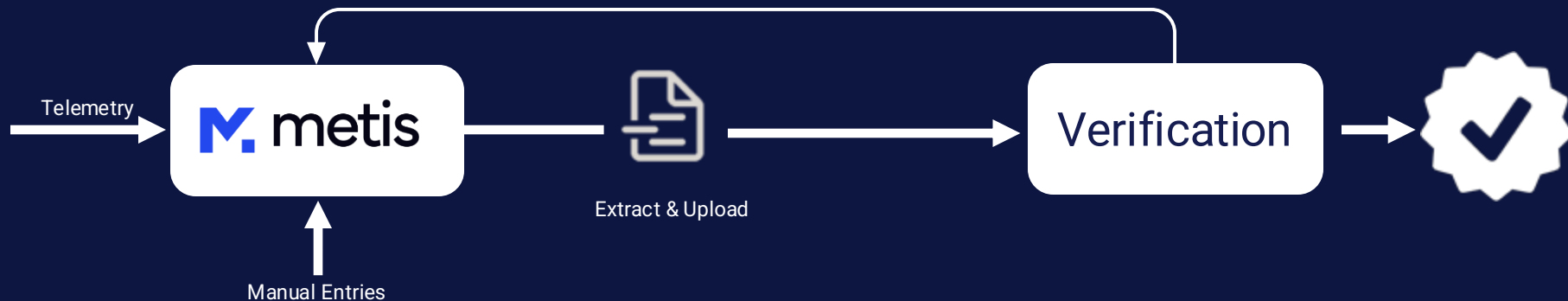
Compliance monitoring and management made easy.

CII, EU ETS & FuelEU online status at a single glance on a fleet and vessel level.



Compliance in Practice

Complete verification cycle for a Shipowner with **40** vessels



Manual issues

- Bunkering Reports
- Cargo Data

ERP issues

- Fuel Definitions
- Port Definitions
- Lack of Validations

Metis Noon Report

Telemetry augmented noon reporting system

Simplification:

Reporting scope reduced to what is necessary

Quality Control:

Vessel specific validations and system design ensure quality at the source

Automation:

Telemetry data reduces time and effort of vessel reporting.

Single Source:

Avoid discrepancies between telemetry and manual data.

The screenshot displays the Metis Noon Report interface. A modal window titled "Consumption" is centered, showing "*ME Consumption Since Last Report" with two large numerical values: 25.46 and 25.43, separated by a colon. The background interface includes a top navigation bar with the Metis logo, a user profile dropdown for Jonathan, and a status bar with "Back To Reports" and "DRAFT" buttons. The main content area is divided into sections: "Machinery" with input fields for Main and Auxiliary Engines, "Consumption & ROB" with a progress bar and data table, and "Consumption" with a table of fuel consumption data. The bottom of the interface has "SAVE" and "SUBMIT" buttons.

Consumption	*ME Core S/R	*ME SPCL	*ME Core S/R	*ME SPCL	*ME Core S/R	*ME SPCL	*ME Core S/R	*ME SPCL
25.46	25.43	188.3	2.48	2.48	298.1	0.12	0.1	100

Telemetry for Compliance

- Gaps
- Outages
- Quality

96%



Data Health

Validity

Ensures that the data fall within an expected range for each signal.

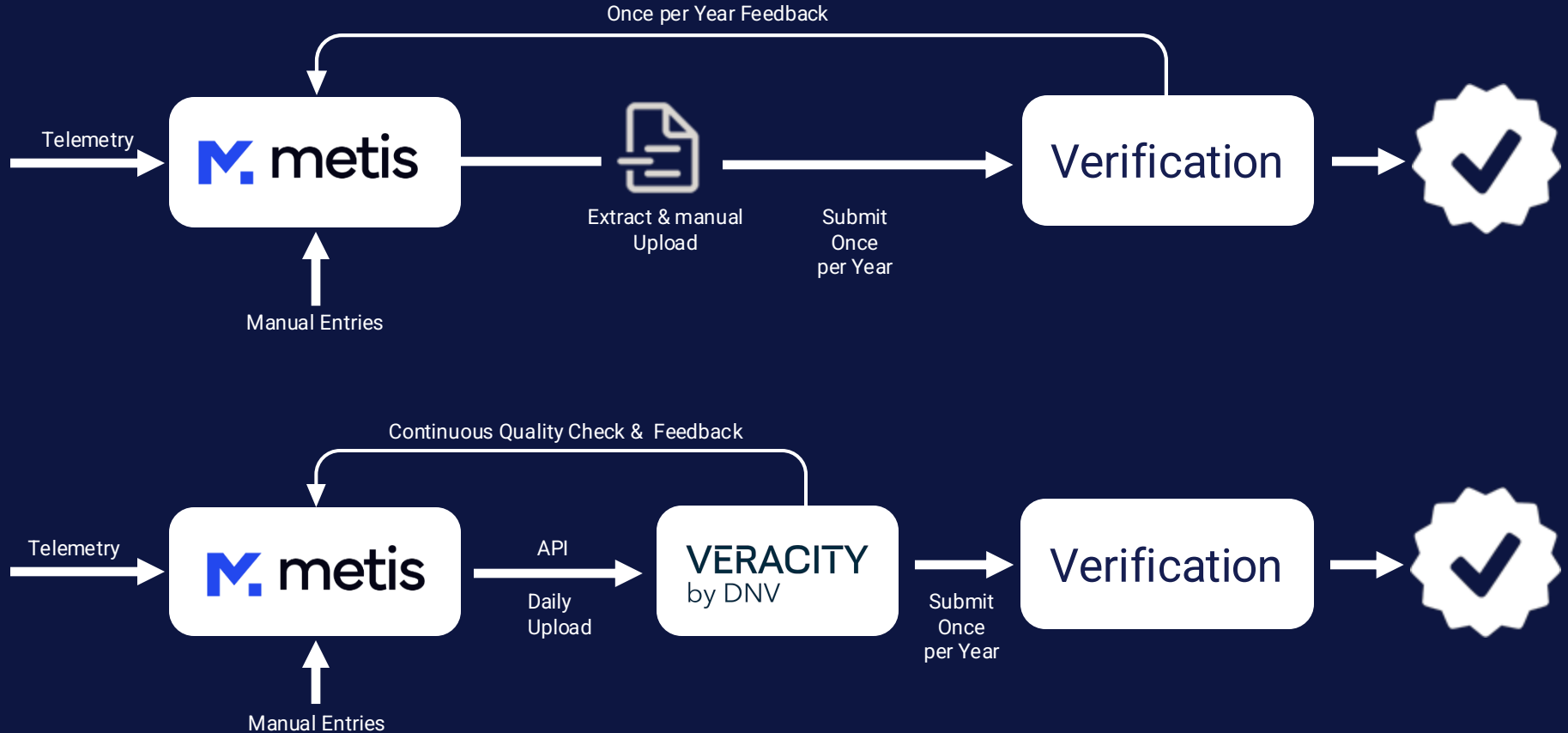
Completeness

Ensures continuous reception of signals without gaps.

Timeliness

Ensures that data are received promptly.

Streamlined Compliance



Streamlined Compliance

